

# T-EASY desks



## QUALITY STANDARD

- LST EN 527-1:2011
- LST EN 527-2:2003

## TECHNICAL INFORMATION

### Desktop

- 25 mm MFC (melamine) with 2 mm ABS edging;
- With or without a cut-out for grommet and wire management;
- With or without a scallop for wire management.

### Adjustable telescopic frame

- L-shaped angle dimensions: 40x40x534 mm; 50x30x460 mm;
- Adjustment range - 600 mm;
- Steel stripe for adjustment - 35x4x910 mm;
- Powder coated metal, matches the colour of columns and feet.

### Columns

- Metal tube - 80x40 mm;
- Powder coated metal.

### Feet type W

- Metal sheet 700x70x30 mm with welded profile for stability;
- Height - 30 mm;
- Plastic feet with height levelling (+10 mm);
- Powder coated metal; matches the colour of frame.



W

### Feet type I

- Metal tube – 796x60x30 mm;
- Plastic feet with height levelling (+10 mm);
- Powder coated metal; matches the colour of frame.

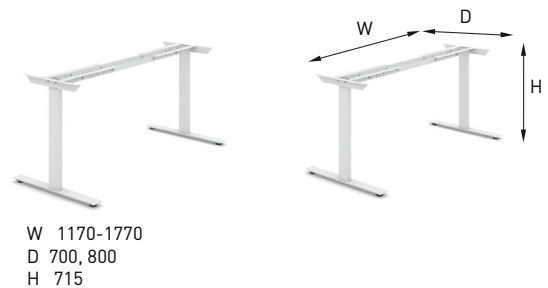
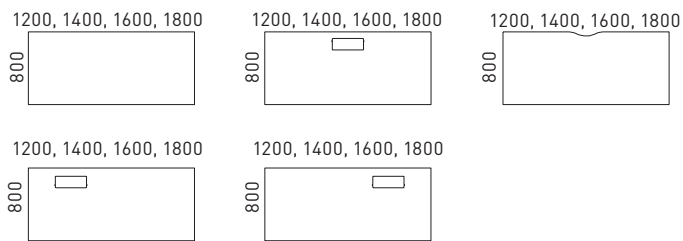


I

## GUARANTEE

- 5 years

## RANGE



### Must be ordered (for desktops with cut-out)



Metal grommet:  
317x119 mm, H=27 mm

### Optional



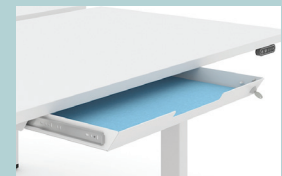
Cable trays



Power socket  
blocks



Cable ducts



Felt-lined metal drawers  
with lock